

QUESTIONS

Question 1 : match:

<u>A</u>	<u>B</u>
1. To add password field	a) Name
2. To add check box field	b) <code><input type = "password"></code>
3. To add text box	c) Written using HTML language
4. Property used to prevent the user from choosing or selecting more than one option in the radio field	d) <code><input type = "text"></code>
5. Static websites	e) <code><input type = "checkbox"></code>

--	--	--	--	--

Question 2 :Re-arrange the following steps to add textbox to the webpage:

- () Save the file with .html extension.
- () create a new text file.
- () open the file using internet browser.
- () write the following order `<input type = "text">` inside the `<form>` tag.

Question 3 :complete the following sentences:

1. is used to create an interactive websites in which the user can enter data.
2. To add student name field, write code.
3. Extention is used To save a webpage with html code.
4. To open an information page click on it's icon.
5. Field is as the same as text field but (●) symbol will be displayed instead of characters to secure a password key.

Question 4 :write the scientific term of the following sentences:

1. Tag is used to add a password field.
2. The tags which is used to create an interactive webpage is written inside
3. field is used so that the user can select one of a limited number of options such as his gender (male/female).
4. To prevent the user from choosing or selecting more than one option or choice, you can add attribute to radio input field
5. is used to type any text via keyboard on a webpage .
6. With a element, you can add a group of other elements to a webpage such as buttons and fields used for data entry in order to send these data to storing.

Question 5: complete the following codes:

1. To add a password field write the following code:

`<input type ="_.....">`

2. To add a radio button field write the following code:

`<input type ="_.....">`

3. To add an address input field write the following code:

`<input ="text">`

Question 6: complete :

- 1.To add the hopes of students into the form you can add input field by which he can select more than one choice.
- 2..... attribute used for display a text on the button.
- 3..... button used to send all Form data to other webpage.
- 4..... Button used to clear all previous data from all input fields.
- 5.To save html code as an information webpage we use Extension.

Question 7: Put (v) or (x) :

1. The action attribute value of the submit button used to define the webpage in which the data entered by user in the form will be send. ()
2. The reset button is used to send data that have been entered into the form. ()
3. Name attribute used for display a text on the button. ()

4. Checkbox field defines a radio button, by which the user can select one of a limited number of options such as your gender (male/female). ()
5. The submit button is used to send data that have been entered into the form. ()

Question 8: write the scientific term:

1. Input field Used to execute task or call JavaScript function
2. Input field used to select more than one choice.
3. Button used to send data that have been entered into the form to a specified webpage.
4. Input field in which you can type any text via keyboard on a webpage.
5. Attribute used for display a text on the button value.

Question 9: complete:

1. To add checkbox field used to select more than one choice.

`<input type="" >`

2. To add a button to the form:

`<input type ="" >`

To add text box to add the address of the user :

`<input type ="" >`

3. To add submit button to send data that have been entered into the form to a specified webpage.

`<input type ="" >`

4. To add reset button to the webpage:

`<input type ="" >`

Question 10: re-arrange the following steps :

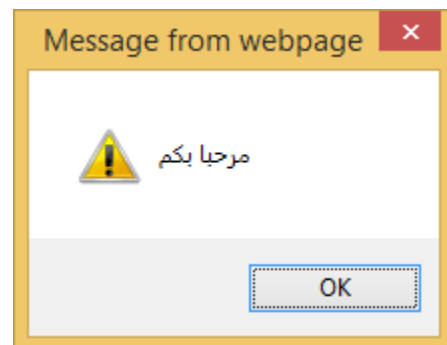
- () save the file with htm or html extension.
- () Write the following code `<input type =”checkbox”>` in the form `<form>`.
- () open the file using a browser.
- () Create a new text document.

Question 11: Put (v) or(X):

1. You must take into consideration the characters case in javascript language.()
2. The java script statements must be written inside the following tag `<script> </script>` ()
3. The java script statements must be ended with `&`.()
4. We use alert statements to display a message in the message box. ()
5. The alert statement must be written inside `{ }`. ()

Question 12: write the code used to show the following message:

.....
.....
.....
.....
.....



Question 13: complete the following sentences:

1. The statement is used to display the message in the webpage itself.
2. The java script statements must be ended with
3. The alert statement must be written inside
4. The java script language can be written in and of the page.

Question 14: complete the following sentences:

1. A language used to develop interactive web page to register data in it is The language in which the tags and orders of java script are written inside is
2. The statement used to display a message inside a window is
3. To open an information page we use program

Question 15: re-arrange the following steps to add password field in a webpage:

- () write <input type =”password”> inside the <form>
- () Save the file with html extension.
- () open the file using the internet browser.
- () Open a new text file.

BOOKLET QUESTIONS

Question 1: Write the scientific term to the following statements:

booklet questions:

1. Used with button and data fields to enter data and sending it to the webpage
2. Give ability to choose or select only one option from many options.
3. Input field in which you can type any text via keyboard on a webpage

Question 2: Complete the following sentences: booklet questions:

1. To create an interactive webpage for register a student data you add used to input data.
2. To add student name input field, you can add to a webpage
3. (●) symbol will be displayed instead of original text to secure
4. To choose your gender you can add To a webpage..

Question 3: match

A

1. Add a textbox field
2. Add a radio button field
3. Add a password field
4. Add an age input field

B

- a) `<input type="text">`
- b) `<input type="password">`
- c) `<input type="radio">`
- d) `<input type="text">`

Question 4: Put (v) or (x) :

1. In a webpage the form element doesn't require sending the entered data to the web server ()
2. To prevent the user from choosing or selecting more than one option or choice, you can add name attribute to radio input field ()
3. To add a textbox field in order the user can enter his name, you add radio field ()
4. To select your proficiency language(s), you can add checkbox input field to a webpage ()
5. Name attribute used for display a text on the button ()
6. Submit button used to clear input fields from any previous data ()

Question 5: Complete the following sentences

1. Used to execute task or call JavaScript function
2. Used to send all Form data to other webpage
3. Used to clear all previous data from all input fields

Question 6: match

- | A | B |
|----------------------------|--------------------------------|
| 1. <input type="submit"> | a) Add a checkbox |
| 2. <input type="reset"> | b) Add a button |
| 3. <input type="checkbox"> | c) Add a submit or send button |
| 4. <input type="button"> | d) Add a reset or clear button |

Question 7: write the scientific term:

1. A language used to create an interactive website for registration of data.
2. Used to display a message in a box, which attracts attention of the user to read it.
3. Used to display a message in a webpage.....

Question 8: Put (v) or(X):

1. It is not enough to use html language to verify the validity of the data entered into Web pages.()
2. The java script language is written in a separated file from the HTML file. ()
3. The java script statement must be ended with (;). ()
4. In the language of java script there is no difference between the case of a large or small letters when writing statement sentences. ()

ANSWERS

Question 1 : match:

<u>A</u>	<u>B</u>
1. To add password field	a) Name
2. To add check box field	b) <code><input type = "password"</code>
3. To add text box	c) Written using HTML language
4. Property used to prevent the user from choosing or selecting more than one option in the radio field	d) <code><input type = "text"></code>
5. Static websites	e) <code><input type = "checkbox"></code>

1-b	2-e	3-d	4-a	5-c
-----	-----	-----	-----	-----

Question 2 :Re-arrange the following steps to add textbox to the webpage:

- (3) Save the file with .html extension.
- (1) create a new text file.
- (4) open the file using internet browser.
- (2) write the following order `<input type = "text">` inside the `<form>` tag.

Question 3 :complete the following sentences:

1. **The form** is used to create an interactive websites in which the user can enter data.
2. To add student name field, write **<input type="text">** code.
3. **.html** Extention is used To save a webpage with html code.
4. To open an information page **double** click on it's icon.
5. **password** Field is as the same as text field but (●) symbol will be displayed instead of characters to secure a password key.

Question 4 :complete

1. **<input type="password">**.Tag is used to add a password field.
2. The tags which is used to create an interactive webpage is written inside **<form> </form>**.
3. **Radio button** field is used so that the user can select one of a limited number of options such as his gender (male/female).
4. To prevent the user from choosing or selecting more than one option or choice, you can add **name** attribute to radio button input field
5. **Text box** is used to type any text via keyboard on a webpage .
6. With a **form** element, you can add a group of other elements to a webpage such as buttons and fields used for data entry in order to send these data to storing.

Question 5: complete the following codes:

1. To add a password field write the following code:
<input type =” password”>
2. To add a radio button field write the following code:
<input type =” radio”>
3. To add an address input field write the following code:
<input type =”text”>

Question 6: complete :

1. To add the hopes of students into the form you can add checkbox input field by which he can select more than one choice.
2. Value attribute used for display a text on the button.
3. Submit button used to send all Form data to other webpage.
4. Reset Button used to clear all previous data from all input fields.
5. To save html code as an information webpage we use .html Extension.

Question 7: Put (v) or (x) :

1. The action attribute value of the submit button used to define the webpage in which the data entered by user in the form will be send.(v)
2. The reset button is used to send data that have been entered into the form. (x)
3. Name attribute used for display a text on the button.(x)
4. checkbox field defines a radio button, by which the user can select one of a limited number of options such as your gender (male/female) .(x)

5. The submit button is used to send data that have been entered into the form. (✓)

Question 8: write the scientific term:

1. Input field used to execute task or call JavaScript function **button**.

2. Input field used to select more than one choice. **checkbox**

3. Button used to send data that have been entered into the form to a specified webpage. **submit**

4. Input field in which you can type any text via keyboard on a webpage. **text box**

5. Attribute used for display a text on the button value. **value**

Question 9: complete:

1. To add checkbox field used to select more than one choice.

<input type="checkbox">

2. To add a button to the form:

<input type="button">

To add text box to add the address of the user :

<input type="text">

3. To add submit button to send data that have been entered into the form to a specified webpage.

<input type="submit">

4. To add reset button to the webpage:

<input type="reset">

Question 10: re-arrange the following steps :

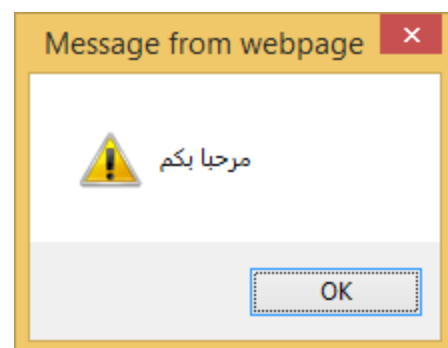
- (3) save the file with htm or html extension.
- (2) Write the following code `<input type =”checkbox”>` in the form `<form>`.
- (4) open the file using a browser.
- (1) Create a new text document.

Question 11: Put (√) or(X):

1. You must take into consideration the characters case.(√)
2. The java script statements must be written inside the following tag `<script> </script>` (√)
3. The java script statements must be ended with `&`.(x)
4. We use alert statements used to display a message in the message box. (√)
5. The alert statement must be written inside `{ }`. (x)

Question 12: write the code used to show the following message:

```
<body>  
<script>  
alert(“مرحبا بكم”);  
</script>  
</body>
```



Question 13: complete the following sentences:

1. The **document.write** statement is used to display the message in the webpage itself.
2. The java script statements must be ended with **(;)**.
3. The alert statement must be written inside **“ “** .
4. The java script language can be written in **head** and **body** of the page.

Question 14: complete the following sentences:

1. A language used to develop interactive web page to register data in it is **java script**
2. The language in which the tags and orders of java script are written inside is **HTML**
3. The statement used to display a message inside a window is **alert**
4. To open an information page we use **browser** program

Question 15: re-arrange the following steps to add password field in a webpage:

- (2) write `<input type =”password”>` inside the `<form>`
- (3) Save the file with html extension.
- (4) open the file using the internet browser.
- (1) Open a new text file.

Booklet questions

Question 1: Write the scientific term to the following statements:

booklet questions:

1. Used with button and data fields to enter data and sending it to the webpage .the form
2. Give ability to choose or select only one option from many options. Radio button
3. Input field in which you can type any text via keyboard on a webpage text box.

Question 2: Complete the following sentences: booklet questions:

1. To create an interactive webpage for register a student data you add buttons and fields used to input data.
2. To add student name input field, you can add text box to a webpage
3. (●) symbol will be displayed instead of original text to secure password field
4. To choose your gender you can add radio button To a webpage .

Question 3: match

A

1. Add a textbox field d
2. Add a radio button field c
3. Add a password field b
4. Add an age input field a

B

- a) `<input type="text">`
- b) `<input type="password">`
- c) `<input type="radio">`
- d) `<input type="text">`

Question 4: Put (v) or (x) :

1. In a webpage the form element doesn't require sending the entered data to the web server (x)
2. To prevent the user from choosing or selecting more than one option or choice, you can add name attribute to radio input field (v)
3. To add a textbox field in order the user can enter his name, you add radio field (x)
4. To select your proficiency language(s), you can add checkbox input field to a webpage (v)
5. Name attribute used for display a text on the button (x)
6. Submit button used to clear input fields from any previous data (x)

Question 5: Complete the following sentences

1. **button** Used to execute task or call JavaScript function
2. **submit** Used to send all Form data to other webpage
3. **reset** Used to clear all previous data from all input fields

Question 6: match

- | A | B |
|-------------------------------------|--------------------------------|
| 1. <input type="submit"> c | e) Add a checkbox |
| 2. <input type="reset"> d | f) Add a button |
| 3. <input type="checkbox"> a | g) Add a submit or send button |
| 4. <input type="button"> b | h) Add a reset or clear button |

Question 7: write the scientific term:

1. A language used to create an interactive website for registration of data. **Java script**
2. Used to display a message in a box, which attracts attention of the user to read it. **alert**
3. Used to display a message in a webpage. **document.write**

Question 8: Put (v) or(X):

1. It is not enough to use html language to verify the validity of the data entered into Web pages. (**v**)
2. The java script language is written in a separated file from the HTML file. (x)
3. The java script statement must be ended with (;). (**v**)
4. In the language of java script there is no difference between the case of a large or small letters when writing statement sentences. (x)