


Data and Analysis

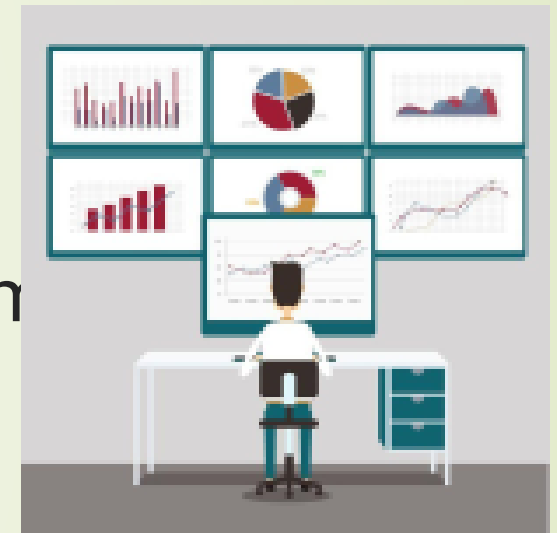




Memory refers to the part of a computer system that stores data for use by the CPU

When data is stored and processed by computing device it is called information

This can be image , text, audio , software , apps , and video.





Activity 7.1

Page 13

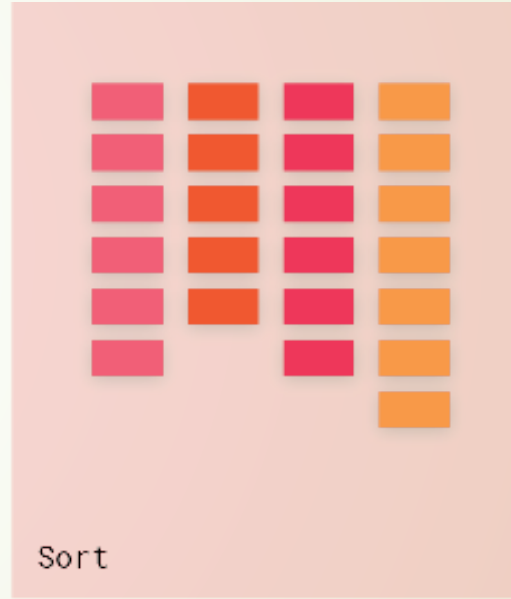
Data and Analysis

Memory refers to the part of a computer system that stores data for use by the CPU.

When data is stored and processed by a computing device it is called information.

Name five ways data can be stored. *Answers may vary.*

1	<i>images</i>
2	<i>text documents</i>
3	<i>audio files</i>
4	<i>software programs</i>
5	<i>video files</i>



The data can be present in different ways , for example
sport team by wins, score ,
weather by high and low temperature , wind ,
humidity and dust



Activity 7.2

Page 14

Data and Analysis

Often the same data can be presented in different ways to show a particular piece of information.

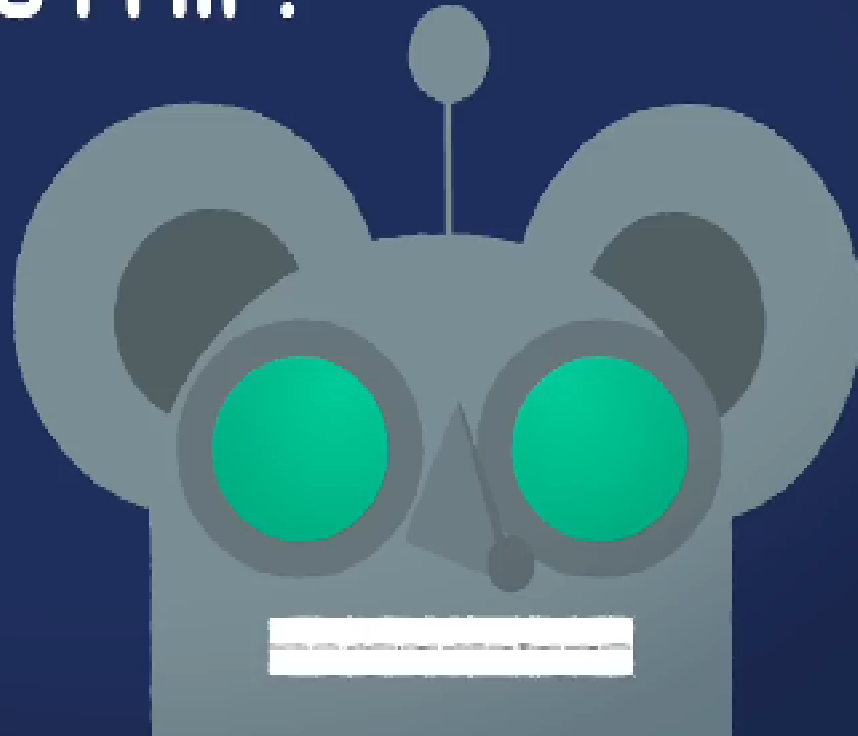
You have been doing a project on vehicle use in Dubai and have collected a great amount of information that includes brands, types, economy and much more. Think about all the possible ways you could sort your information.

Choose and explain 5 different ways for sorting your information.

1	<i>Answers will vary, e.g. colour, size, brand, tables, images ...etc</i>
2	
3	
4	
5	



What is an
Algorithm?



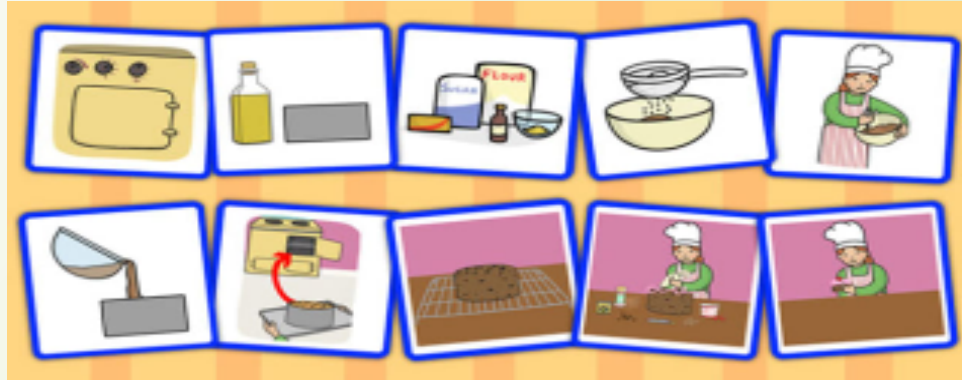
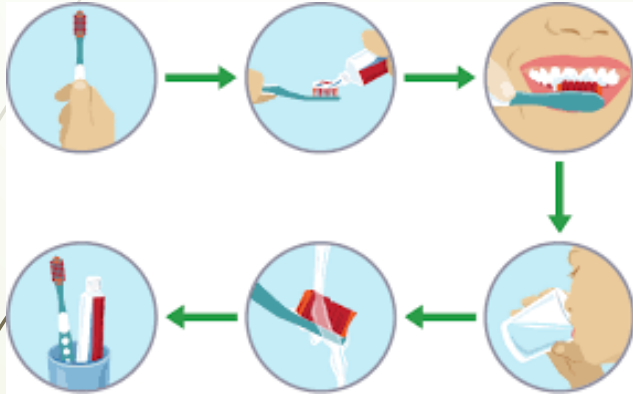



Algorithms and Programming

A computer programming is a sequence of instructions written to perform specified task with computer.


A program follow a specific order or instruction

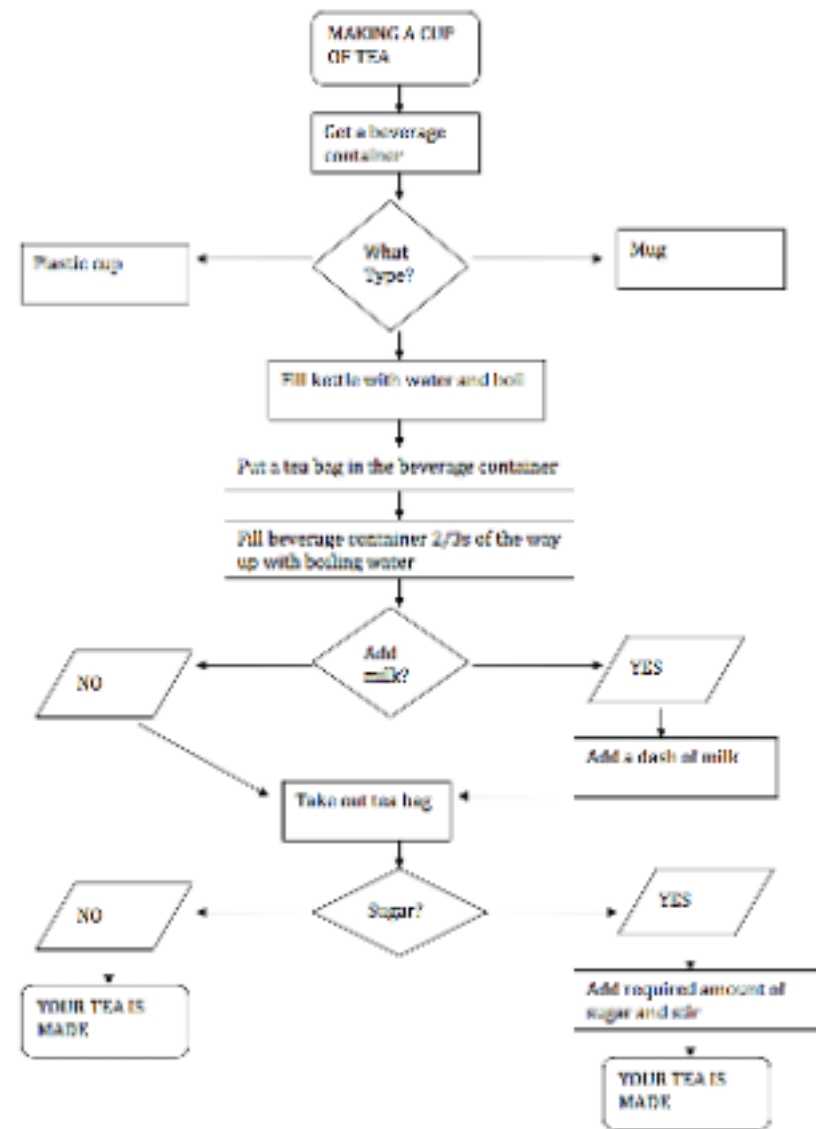
Algorithm are step by step instructions and used to break a complex task into smaller steps





You can create a flowchart to represent the steps in process.







Activity 8

True or False

	Statement	True/False
1	Python is a programming language that runs on a single platform and you need to buy a licence to use it.	<input type="checkbox"/>
2	IDLE is a tool that can be used to run the Python codes you write on your computer.	<input type="checkbox"/>
3	When a Python file is created, any file extension can be used.	<input type="checkbox"/>
4	A Python program can be as short as a one line of code.	<input type="checkbox"/>
5	There are many Python IDEs available and programmers use what they like.	<input type="checkbox"/>